

Jayco | Pinnacle & North Point Fifth Wheel

# LUXURY FIFTH WHEELS

PINNACLE & NORTH POINT



**2+3**  
YEAR | YEAR  
WARRANTY

# INTERIOR DESIGN



## CLASSIC COTTAGE



Wood



Floor



Countertop



Main Fabric

## MODERN FARMHOUSE



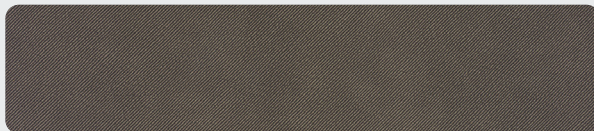
Wood



Floor



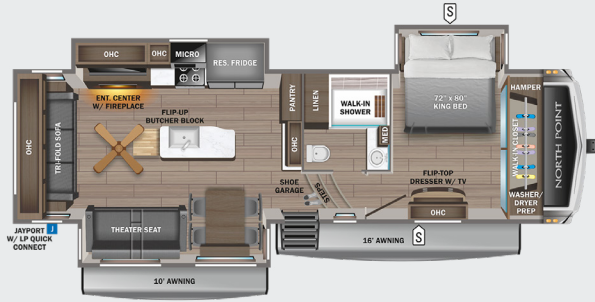
Countertop



Main Fabric

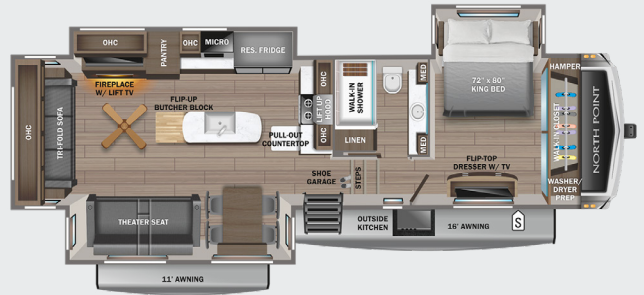
**310RLTS**

OPTIONS: A, B



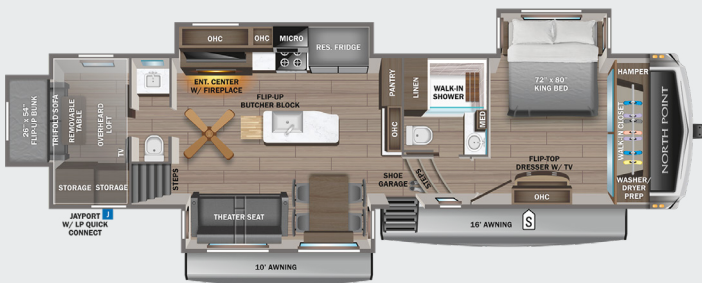
**340CKTS**

OPTIONS: A, B



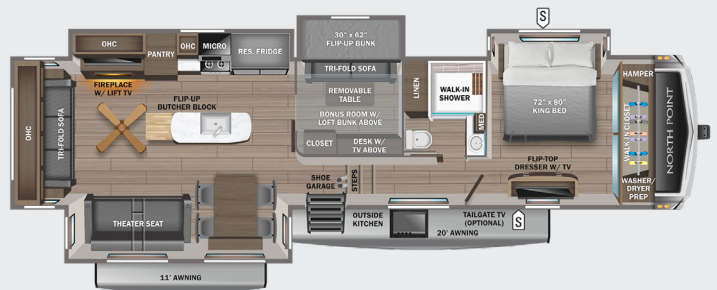
**373BHOK**

OPTIONS: A, B



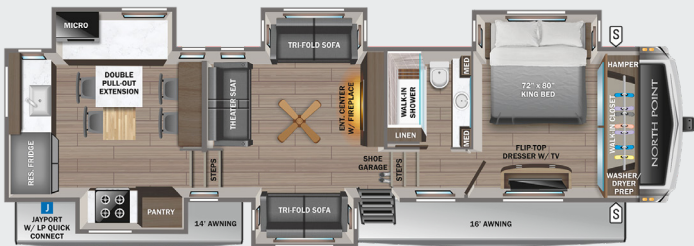
**377RLBH**

OPTIONS: A, B



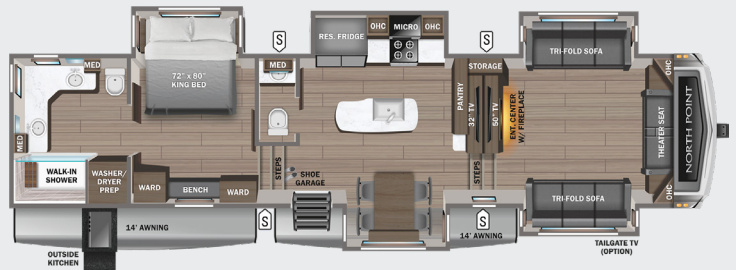
**380RKG**

OPTIONS: A, B



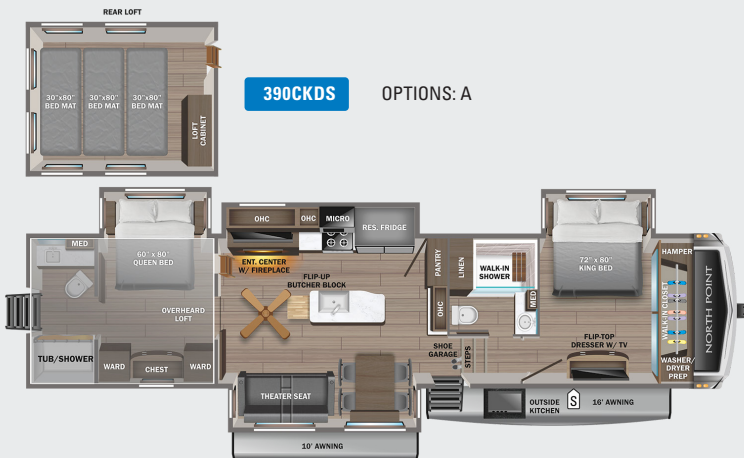
**382FLRB**

OPTIONS: A, B



**390CKDS**

OPTIONS: A



**OPTIONS**

**A**



20 Cu. Ft. Fridge

**B**



Queen Bed



STORAGE

**MICRO**

MICROWAVE

**OHC**

OVERHEAD CABINETS

**FRIDGE**

REFRIGERATOR

**WARD**

WARDROBE

# STANDARDS & OPTIONS

## EXTERIOR

12 in. structural steel I-beam with 10 in. steel drop frame  
 Stronghold VBL™ aluminum framed and vacuum bond laminated  
 gelcoated fiberglass exterior walls (including rear wall and  
 slide room end walls)  
 Magnum Truss™ XL6™ Roof System (strongest tested roof in  
 the industry) with one-piece, seamless roof material with a  
 20 year warranty  
 Climate Shield™ zero-degree tested weather protection:  
 - Fully-enclosed and heated underbelly (ducted)  
 - 40,000 BTU output furnace  
 - Double layer fiberglass batt insulation (roof & floor)  
 - PEX plumbing, 2 in. block foam & reflective foil  
 JaySMART™ (Safety Markers And Reverse Travel) LED lighting  
 (patented)  
 Painted fiberglass front cap with double clear coat and built-in  
 specialty LED lighting  
 Frameless, dark tinted, safety-glass windows  
 Custom automotive-grade vinyl exterior graphics package  
 Skirt metal enclosed drop frame  
 LED exterior lighting package  
 Dual 30 lb. propane bottles with auto regulator  
 Doorside compartment framed and vented for third propane bottle  
 Pass-through storage with Slam-latch™ baggage doors  
 Digital TV antenna with Wi-Fi extender  
 Exterior marine-grade speakers  
 Fully enclosed, universal docking center:  
 - Selectable water connections  
 - Quick-connect outside shower  
 - Black tank flush  
 - Winterization and sanitation  
 - Independent satellite wiring  
 - Whole coach cable hookups  
 Water heater bypass  
 Battery disconnect  
 Under-mounted spare tire  
 JayPort system for outside griddle (all floorplans without a  
 standard outside kitchen)  
 Built in sewer hose carrier  
 3,000 lb. tow hitch with 4-way pin  
 Inverter pre-wire to select outlets

## INTERIOR

Solid hardwood slide fascia  
 Handcrafted hardwood glazed doors and drawers  
 5/8 in. tongue-and-groove joined plywood floor decking  
 Vinyl flooring (made in the USA) throughout (includes slideout  
 floors)  
 Ceiling fan (select models)  
 LED interior lighting throughout  
 LED accent lighting above slideouts  
 Tri-fold hide-a-bed sofa with residential sleep surface  
 (select models)  
 Dual USB charging ports throughout  
 "Shoe garage" in hallway step (select models)  
 Flip-up tabletop storage next to tri-fold sofa (select models)  
 JayVoice voice command system - controls lighting, A/C and furnace  
 Soft close, heavy-duty, 75 lb. full-extension, steel ball-bearing  
 drawer guides  
 Stainless steel kitchen sink

Pull-out spice rack above microwave (select models)  
 Residential-grade, pull-out kitchen faucet  
 Extra 120V power outlets in kitchen and slide rooms  
 Flip-up countertop extension with 24 in. x 24 in. butcher block  
 bar top (select models)  
 Pull-out utility drawer under kitchen sink  
 Toe kick nightlights in bedroom and bathroom  
 Residential quilted bedspread and pillows  
 Gas-strutted under-bed storage  
 C.P.A.P. prepped bedroom (includes 120V outlets and night  
 stands with cup holders)  
 Carbon monoxide and LP detector  
 Flip-up hidden storage in bedroom chest of drawers  
 (select models)  
 Built-in laundry hamper in wardrobe (select models)  
 Cup holders in bedroom nightstands  
 Bathroom skylight  
 LED backlit custom framed mirror and medicine cabinet  
 Porcelain toilet with foot flush  
 Vessel bowl sink with high rise faucet in main bathroom

## CUSTOMER VALUE PACKAGE (MANDATORY)

15,000 BTU "Whisper Quiet" A/C (main)  
 15,000 BTU "Whisper Quiet" A/C (bedroom)  
 Electric patio awning with integrated LED lights  
 16 gal. gas/electric DSI water heater  
 Custom machined aluminum rims  
 Keyed-Alike™ lock system (single key for all doors/locks)  
 Rooftop and ground solar prep  
 Backup, main entrance door and side observation security  
 camera prep (includes a power switch in the bedroom to use  
 the optional 7 in. monitor for security)  
 XL grab handle  
 50 in. 4K Smart LED HDTV with fully digital HDMI® output &  
 two extra HDMI cables  
 Home entertainment system with subwoofer  
 Hidden hinges on cabinet doors  
 Residential king (72 in. x 80 in.) mattress with under-bed storage  
 Wireless remote control system (includes Bluetooth® wireless  
 controls) with dimmer switches

## 5 STAR HANDLING PACKAGE (MANDATORY)

17.5 in. 'H' rated Uniroyal tires  
 MORryde® rubber pin box  
 Dexter® Axles with Nev-R-Adjust® brakes, E-Z Lube® hubs, &  
 4,000 lb. leaf springs  
 MORryde® CRE-3000™ rubberized suspension  
 Wet bolt fasteners and bronze bushings

## LUXURY PACKAGE (MANDATORY)

6-point hydraulic auto-leveling system  
 2nd electric patio awning with integrated LED lights  
 MORryde® StepAbove™ entrance steps with strut assist (main  
 entrance)  
 JAYCOMMAND® "Smart RV" system  
 Cellular prep for 4G WiFi repeater and JAYCOMMAND® "Smart  
 RV" system  
 High gloss gelcoated sidewalls

Oversized multi-battery compartment (industry leading room

for 4-6 batteries)  
 Frameless dark tinted safety-glass windows  
 Privacy roller shades  
 Free-standing (no pedestal) table with leaf and (2) free-standing  
 and (2) folding chairs  
 LED fireplace with electric space heater  
 Central vacuum system with dust port  
 Fresh Water Drinking System (patented) (connects to ice maker)  
 30 in. residential microwave  
 21 cu. ft. residential refrigerator with 1800W inverter  
 Residential 24 in. Insignia™ stove (3.73 cu. ft. with 12,000 BTU  
 high output burner)  
 Residential solid-surface kitchen countertop with bamboo sink  
 cover and strainer  
 Washer/dryer prep  
 32 in. 4K Smart bedroom TV  
 Residential walk-in shower with shampoo/soap holder and  
 teak seat

## OPTIONS

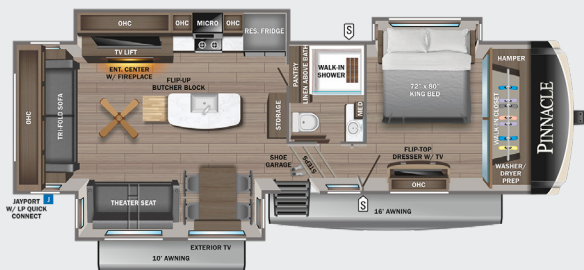
True interior design choice (Modern Farmhouse or Classic Cottage)  
 Customer Value Package: 15,000 BTU central air with heat pump  
 Extreme Weather Package: 120V heated holding tank pads and  
 12V wrapped and heated fresh water line  
 Wireless backup/side view/ front entry door observation kit  
 with 7 in. monitor  
 Queen residential foam top mattress  
 39 in. 4K Smart TV in cargo  
 Sani-Con® Turbo waste management system  
 Generator prep with 120 lb. max LP system (3) 40 lb. LP bottles  
 5,500W Onan® Microquiet generator  
 Frameless dual pane tinted safety-glass windows  
 Slideout awning (quantity varies by model)  
 7K hydraulic disc brake package  
 8K hydraulic disc brake package  
 3rd-15,000 BTU ducted A/C  
 20 cu. ft. 12V refrigerator  
 Truma on-demand hot water system  
 Outside griddle for JayPort system (includes LP quick-connect)  
 (310RLTS, 373BHOK, 380RKGS)  
 Overlander 2 Solar Package: 30-amp controller, 1800W  
 inverter and (2) 200W solar panels  
 Overlander 4 Solar Package: (4) 200W solar panels, (2) 100-  
 amp/hour lithium heated batteries, 60-amp controller,  
 3000W inverter, DC/DC power converter, soft start power  
 save main 15K A/C, soft start power save for bedroom 15K  
 A/C, battery monitor, energy management system, roof  
 pre-wire for additional solar panels, generator prep capable  
 and heavy gauge steel battery enclosure  
 Overlander EXT Solar Package: 3000W inverter/charger with  
 internal 50-amp transfer switch, energy management system,  
 (6) solar panels with 200W each, (6) 100-amp/hour lithium  
 heated batteries, 12V DCA/C in bedroom, DC to DC battery  
 charger, 100-amp MPPT controller management, generator  
 prep capable

\*Indicates split tanks

FLOORPLAN	TOTAL EXTERIOR LENGTH	EXTERIOR WIDTH	EXTERIOR HEIGHT (WITH A/C)	INTERIOR HEIGHT (MAIN)	INTERIOR HEIGHT (UPPER DECK)	UNLOADED VEHICLE WEIGHT	DRY HITCH WEIGHT	GVWR	CARGO CARRYING CAPACITY	FRESH WATER CAPACITY (INCLUDING WATER HEATER)	GRAY WASTE WATER CAPACITY	BLACK WASTE WATER CAPACITY	SLEEPING CAPACITY
310RLTS	36' 1"	8' 0"	13' 5"	8' 6"	6' 7"	12,150	2,445	15,460	3,310	87	87*	50	3-4
340CKTS	37' 10"	8' 0"	13' 3"	8' 5"	6' 7"	12,810	2,130	15,750	2,940	87	87*	50	4-6
373BHOK	40' 1"	8' 0"	13' 4"	8' 5"	6' 7"	13,795	2,535	16,995	3,200	85	87*	87*	6-7
377RLBH	42' 11"	8' 0"	13' 3"	8' 6"	6' 7"	14,410	2,785	16,995	2,585	87	87*	50	8-10
380RKGS	42' 3"	8' 0"	13' 5"	8' 5"	6' 7"	13,940	2,785	16,995	3,055	87	87*	50	4-6
382FLRB	44' 0"	8' 0"	13' 4"	8' 5"	6' 6"	14,765	2,945	17,250	2,485	87	82.5*	74*	4-6
390CKTS	44' 0"	8' 0"	13' 3"	8' 5"	6' 7"	15,425	2,725	18,000	2,575	87	137*	100*	7-9

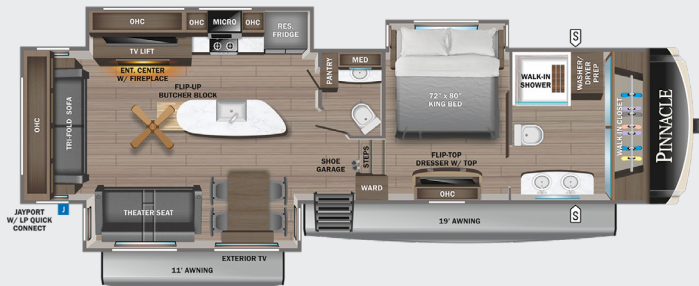
**32RLTS**

OPTIONS: A, B



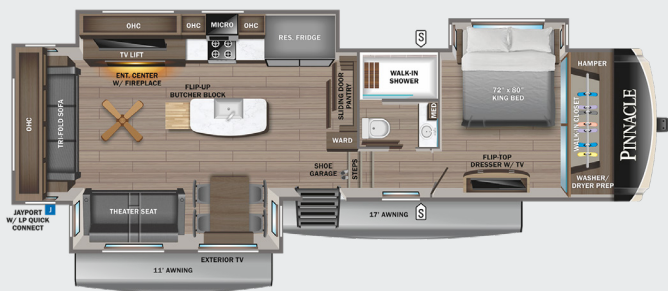
**36FBTS**

OPTIONS: A, B



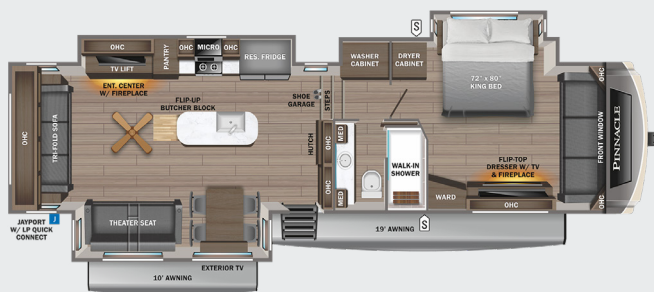
**36KPTS**

OPTIONS: A, B



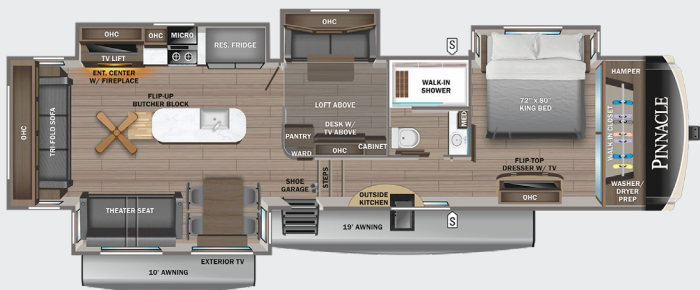
**36SSWS**

OPTIONS: A, B, C



**37MDQS**

OPTIONS: A, B



**38FLGS**

OPTIONS: A, B, D



**OPTIONS**

- STORAGE
- MICRO MICROWAVE
- OHC OVERHEAD CABINETS
- FRIDGE REFRIGERATOR
- WARD WARDROBE

**A**



20 Cu. Ft. Fridge

**B**



Queen Bed

**C**



Walk-In Closet

**D**



Butler Pantry

# STANDARDS & OPTIONS

## EXTERIOR

Stronghold VBL™ aluminum framed and vacuum bond laminated gelcoated fiberglass exterior walls (including slide room end walls)

12 in. structural steel I-beam with 10 in. steel drop frame

Magnum Truss™ XL6™ Roof System (strongest tested roof in the industry) with one piece, seamless roof material with a 20 year warranty material

Climate Shield™ zero-degree tested weather protection:

- Fully enclosed and heated underbelly (ducted)
- 40,000 BTU output furnace
- Double layer fiberglass batt insulation (roof and floor)
- PEX plumbing, 2 in. block foam and reflective foil

JaySMART™ (Safety Markers And Reverse Travel) LED lighting (patented)

Painted fiberglass front and rear cap with double clear coat and built-in specialty LED lighting

Frameless dark tinted safety-glass windows

Custom automotive-grade vinyl exterior graphics package

102 in. widebody construction

Skirt metal enclosed drop frame

LED exterior lighting package

Dual 30 lb. propane bottles with auto regulator

Doorside compartment framed and vented for third propane bottle

Pass-through storage with Slam-latch™ baggage doors

Digital TV antenna with Wi-Fi extender

Exterior marine-grade speakers

Fully enclosed, universal docking center:

- Selectable water connections
- Quick-connect outside shower
- Black tank flush
- Winterization and sanitation
- Independent satellite wiring
- Whole coach cable hookups

Water heater bypass

Battery disconnect

Under-mounted spare tire

JayPort outside griddle prep (standard on all floorplans without a standard outside kitchen)

Built in sewer hose carrier

3,000 lb. tow hitch with 4-way pin

Inverter pre-wire to select outlets

120V heat blankets on all tanks plus 12V heat tape on fresh water line

## INTERIOR

Solid hardwood slide fascia

Handcrafted hardwood glazed doors, stiles, drawers and trim

5/8 in. tongue-and-groove joined plywood floor and 3/8 in. roof decking

Vinyl flooring (made in the USA) throughout including slide rooms

Ceiling fan (select models)

LED interior lighting throughout

LED accent lighting above slideouts

Tri-fold hide-a-bed sofa with sleep surface (select models)

Dual USB charging ports throughout

12V charging station

JayVoice voice command system - controls lighting, A/C and furnace

"Shoe garage" in hallway step (select models)

Flip-up tabletop storage next to tri-fold sofa (select models)

Soft close, heavy-duty, 75 lb. full extension, steel ball-bearing drawer guides

Toe kick nightlights in bedroom, bathroom and kitchen

Pull-out spice rack above microwave (select models)

Farmhouse stainless steel kitchen sink

Residential-grade, pull-out kitchen faucet

Extra 120V power outlets in kitchen and slide rooms

Flip-up countertop extension with 24 in. x 24 in. butcher block bar top (select models)

Pull-out utility drawer under kitchen sink

Residential quilted bedspread and pillows

Cedar-lined front wardrobe closet

Gas-strutted under-bed storage

C.P.A.P. prepped bedroom (includes 120V outlets and night stands)

Carbon monoxide and LP detector

Flip-up hidden storage in bedroom chest of drawers (select models)

Built-in laundry hamper in wardrobe (select models)

Cup holders in bedroom nightstands (N/A 36SSWS)

Bathroom skylight

LED backlit custom framed mirror and medicine cabinet

Residential bathroom backsplash

Vessel bowl sink with high rise faucet in main bath

Porcelain toilet with foot flush

## CUSTOMER VALUE PACKAGE (MANDATORY)

15,000 BTU "Whisper Quiet" A/C with heat pump (main)

15,000 BTU "Whisper Quiet" A/C (bedroom)

Electric patio awning with integrated LED lights

16 gal. gas/electric DSI water heater

Custom machined aluminum rims

Keyed-Alike™ lock system (single key for all doors/locks)

Rooftop and ground solar prep

Backup, main entrance door and side observation security camera prep (includes a power switch in the bedroom to use the optional 7 in. monitor for security)

Hidden hinges on cabinet doors

XL grab handle

Home entertainment system with subwoofer

50 in. 4K SMART LED HDTV with fully digital HDMI® output and two additional HDMI® cables

Wireless remote control system (includes Bluetooth® wireless interior controls) with dimmer switches

Residential king (72 in. x 80 in.) mattress with under-bed storage

## 5 STAR HANDLING PACKAGE (MANDATORY)

17.5 in. 'H' rated Uniroyal tires

MORryde® rubber pin box

Dexter® axles with Nev-R-Adjust® brakes, E-Z Lube® hubs & 4,000 lb. leaf springs

MORryde® LRE-4000™ rubberized suspension

Wet bolt fasteners and bronze bushings

## LUXURY PACKAGE (MANDATORY)

6-point hydraulic auto-leveling system

MORryde® StepAbove™ entrance steps (main entrance) with strut assist

2nd electric patio awning with integrated LED lights

Powered 50-amp cord reel

JAYCOMMAND® "Smart RV" system

Cellular prep for 4G Wi-Fi antenna and JAYCOMMAND®

High gloss gelcoated sidewalls

Oversized multi-battery compartment (industry leading room for 4-6 batteries)

32" 4K outside Smart LED TV

Solid hardwood cabinet stiles

Central vacuum system with dust port

Day/night roller shades in living room

Frameless dark tinted safety-glass windows

Free-standing (no pedestal) table with leaf, (2) free-standing and (2) folding chairs

LED fireplace with electric space heater

Fresh Water Drinking System (patented) for fresh drinking water at the kitchen sink and water/ice dispensers in the residential refrigerator

Residential refrigerator with ice maker and 1800W pure sine wave inverter

30 in. residential microwave

Residential 24 in. Insignia™ stove (3.73 cu. ft. with 12K BTU high output burner)

Residential solid-surface kitchen countertop with solid-surface sink covers

32 in. 4K Smart LED bedroom TV

Residential walk-in shower with shampoo/soap holder, teak seat and shower tower

Washer/dryer prep

## OPTIONS

True interior design choice (Modern Farmhouse or Silvermist)

Truma on-demand hot water system

Full body paint- Sand, Steel and Diamond

Wireless backup/side view/ front entry door observation kit with 7 in. monitor

Sani-Con® Turbo waste management system

Generator prep with 120 lb. max LP system includes (3) 40lb. LP bottles

5,500W Onan® Microquiet generator

Frameless dual-pane tinted safety-glass windows

Slideout awning (quantity varies by model)

7K hydraulic disc brake package

8K hydraulic disc brake package

3rd-15,000 BTU ducted A/C

20 cu. ft. 12V refrigerator

Queen residential foam-top mattress

Front wardrobe in place of front windshield and sofa lounge (36SSWS)

Butler's pantry (in place of half bath, 38FLGS)

Outside griddle for JayPort system (32RLTS, 36FBTS, 36KPTS, 36SSWS)

Overlander 2 Solar Package: 30-amp controller, (1) 1800W inverter and (2) 200W solar panels

Overlander 4 Solar Package: (4) 200W solar panels, (2) 100-amp/hour lithium heated batteries, 60-amp controller, 3000W inverter, DC/DC power converter, soft start power save main 15K A/C, soft start power save for bedroom 15K A/C, battery monitor, energy management system, roof pre-wire for additional solar panels, generator prep capable and heavy gauge steel battery enclosure

Overlander EXT Solar Package: 3000W inverter/charger with internal 50-amp transfer switch, energy management system, (6) solar panels with 200W each, (6) 100-amp/hour lithium heated batteries, 12V DC A/C in bedroom, DC to DC battery charger, 100-amp MPPT controller management, generator prep capable

\*Indicates split tanks

FLOORPLAN	TOTAL EXTERIOR LENGTH	EXTERIOR WIDTH	EXTERIOR HEIGHT (WITH A/C)	INTERIOR HEIGHT (MAIN)	INTERIOR HEIGHT (UPPER DECK)	UNLOADED VEHICLE WEIGHT	DRY HITCH WEIGHT	GVWR	CARGO CARRYING CAPACITY	FRESH WATER CAPACITY (INCLUDING WATER HEATER)	GRAY WASTE WATER CAPACITY	BLACK WASTE WATER CAPACITY	SLEEPING CAPACITY
32RLTS	36' 4"	8' 6"	13' 4"	8' 7"	6' 7"	12,870	2,415	15,995	3,125	87	87*	50	4-5
36FBTS	40' 9"	8' 6"	13' 4"	8' 7"	6' 7"	13,750	2,510	16,995	3,245	87	87*	87*	3-4
36KPTS	40' 11"	8' 6"	13' 4"	8' 6"	6' 7"	13,825	2,665	16,995	3,325	87	87*	50	4-6
36SSWS	40' 1"	8' 6"	13' 4"	8' 7"	6' 8"	14,300	2,925	17,250	2,950	87	87*	50	4-5
37MDQS	41' 6"	8' 6"	13' 4"	8' 6"	6' 8"	14,555	2,885	17,500	2,945	87	87*	50	6-8
38FLGS	44' 5"	8' 6"	13' 4"	8' 6"	6' 7"	14,835	2,805	17,750	2,915	87	82.5*	74*	6

# INTERIOR DESIGN



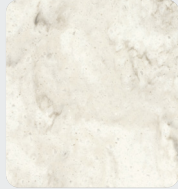
## SILVERMIST



Wood



Floor



Countertop



Main Fabric

## MODERN FARMHOUSE



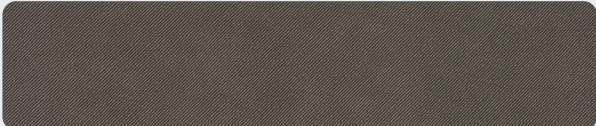
Wood



Floor



Countertop



Main Fabric

# PINNACLE PAINT OPTIONS



DIAMOND FULL-BODY PAINT



SAND FULL-BODY PAINT



STEEL FULL-BODY PAINT

# 5-STAR HANDLING PACKAGE

The 5-Star Handling Package is a Jayco exclusive, a powerful blend of high-end American-made components that make pulling a luxury fifth wheel a breeze.



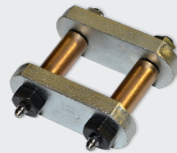
DEXTER® AXLES WITH NEV-R-ADJUST® BRAKES

The Benchmark of the trailer industry!



MORryde® PIN BOX

Allows pin box to travel forward and backward as well as side-to-side, creating a smoother tow.



DEXTER® HEAVY-DUTY 1/2" SHACKLES WITH WET BOLT FASTENERS AND BRONZE BUSHINGS

Resists the wear-and-tear of towing.



MORryde® RUBBERIZED SUSPENSION SYSTEM

Better absorbs and isolates road shock.



UNIROYAL® TIRES

17.5 in. 'H' Rated

# JAYVOICE™

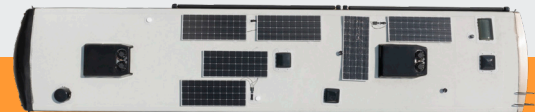


JayVoice activates the systems listed below with a voice-activated command.

- Interior lights
- Exterior lights
- Bedroom lights
- Living room lights
- Dinette lights
- Kitchen lights
- Main A/C
- Second A/C

# Jayco OVERLANDER EXT

SOLAR POWER MANAGEMENT SYSTEM



Overlander EXT Solar Package: 3,000W inverter/charger with internal 50-amp transfer switch, energy management system, (6) solar panels with 200W each, (6) 100-amp/hour lithium heated batteries, 12V DC A/C in bedroom, DC to DC battery charger, 100-amp MPPT controller management, generator prep capable

Meet your Jayco Dealer



Scan QR code for specification definitions

Some specs at the time of print may include estimates. For the most updated information, please visit [Jayco.com](http://Jayco.com)

Jayco, Inc. | P.O. Box 460 | Middlebury, IN 46540

See dealer for further information and prices. All information in this brochure and on [www.jayco.com](http://www.jayco.com) is the latest available at the time of publication approval. Jayco reserves the right to make changes and to discontinue models without notice or obligation. Photography may show optional equipment or props used for decoration purposes only. RVs built for sale in Canada may differ to conform to Canadian codes. JAYCO and the JAYCO BIRD IN FLIGHT are registered trademarks of Jayco, Inc. Printed in USA 1/23 ©2023 Jayco, Inc. 274992



Jayco - Part of the Jayco Family of Companies